

High Capacity Scaffolding Ladders With 2 And Load Capacity 150kg HDG

Our Product Introduction

for more products please visit us on bythaiscaffold.com

Basic Information

- Place of Origin: china tianjin
- Brand Name: bythai
- Model Number: BM224
- Minimum Order Quantity: 1000
- Packaging Details: container
- Delivery Time: 10-25



Product Specification

- Material: Aluminum/HDG
- Step Width: 50cm
- Load Capacity: 150kg
- Step Height: 30cm
- Surface Treatment: HDG
- Color: Silver
- Warranty: 2 Years
- Size: 3m
- Highlight: **HDG Scaffolding Ladders,
Hot Dip Galvanizing Scaffolding Ladders,
150kg Capacity Ladder Scaffold Plank**



High Capacity Scaffolding Ladders With 2 And Load Capacity 150kg HDG

Product Description:

Scaffolding Ladders - Your Ultimate Construction Partner

Are you in need of a reliable and sturdy ladder for your scaffolding projects? Look no further than Scaffolding Ladders! Our top-of-the-line ladders are designed to provide safe and efficient access to your scaffolding structures.

Product Overview

Scaffolding Ladders, also known as Scaffolding Access Ladders, are essential tools for any construction project. They are used to access scaffolding structures and provide a stable and secure platform for workers to carry out their tasks. Our ladders are designed to meet the highest safety standards and are suitable for a wide range of construction sites.

Surface Treatment: HDG

Our ladders are treated with Hot-Dip Galvanizing (HDG) to ensure maximum durability and longevity. This process involves coating the ladder with a layer of zinc, which protects it from rust and corrosion. This makes our ladders ideal for outdoor use and ensures they can withstand harsh weather conditions.

Step Height: 30cm

The step height of our ladders is carefully designed to provide the perfect balance between safety and convenience. At 30cm, it allows for easy and comfortable climbing while ensuring stability and minimizing the risk of accidents.

Step Width: 50cm

The 50cm step width of our ladders provides ample space for workers to stand and move around while working on the scaffolding. This ensures maximum efficiency and productivity, allowing workers to focus on their tasks without feeling constrained by the ladder.

Load Capacity: 150kg

Safety is our top priority, which is why our ladders have a load capacity of 150kg. This means they can easily support the weight of one or more workers and their equipment without compromising on stability or strength.

Material: Aluminum/HDG

We understand that every construction site is different and may require different types of ladders. That's why we offer our ladders in two materials - Aluminum and HDG. Our aluminum ladders are lightweight and easy to maneuver, while our HDG ladders are heavy-duty and suitable for more demanding construction projects.

Why Choose Scaffolding Ladders?

Scaffolding Ladders are the perfect choice for all your scaffolding access needs. With our top-quality ladders, you can enjoy the following benefits:

Highly durable and long-lasting

Safe and secure climbing experience

Easy to use and maneuver

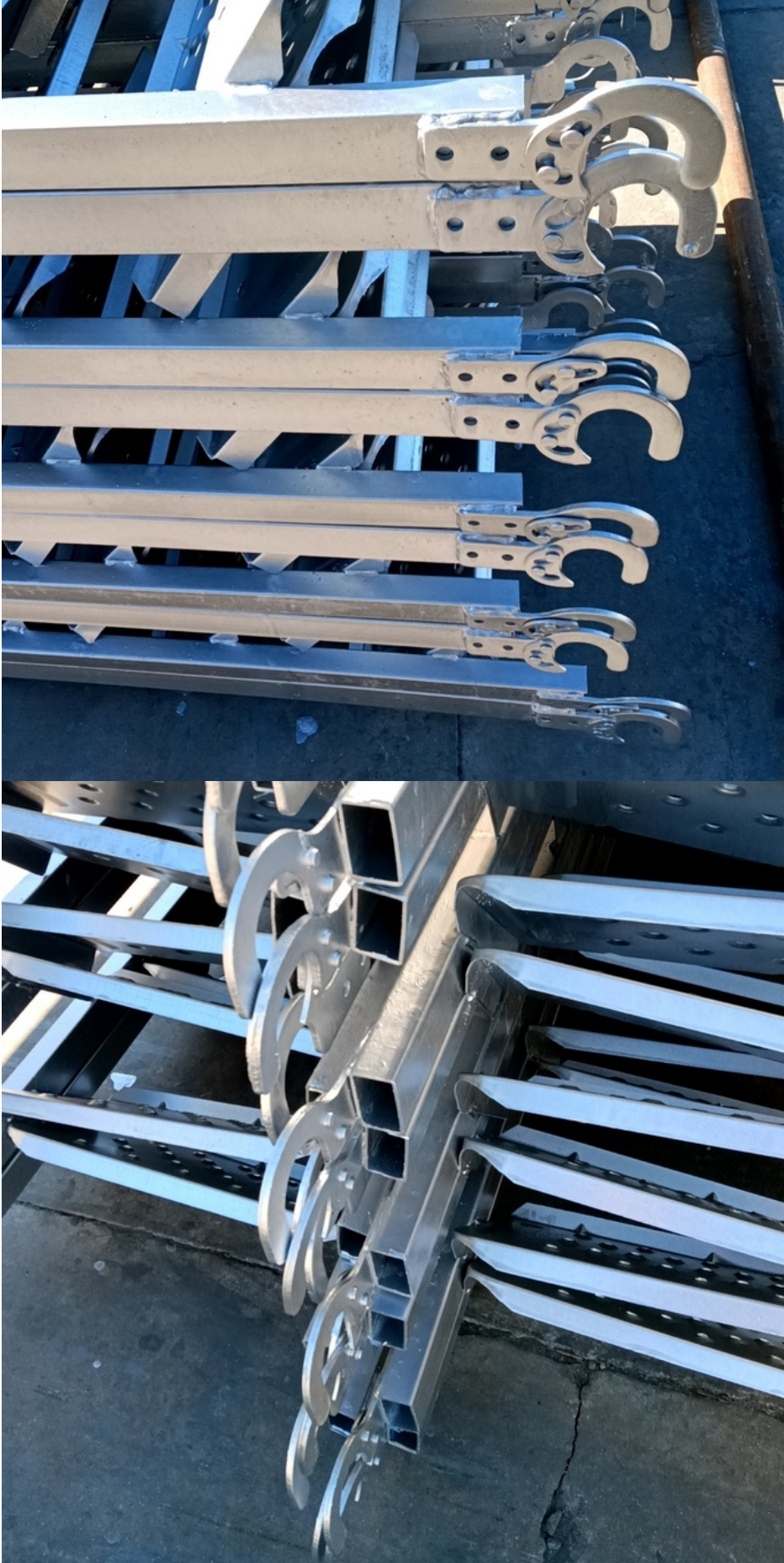
Suitable for a wide range of construction sites

Available in a variety of materials and sizes

Don't compromise on safety and efficiency - choose Scaffolding Ladders for your next construction project. Contact us today to learn more about our products and services!

Technical Parameters:

Parameter	Description
Product Name:	Scaffolding Portable Ladders
Usage:	Scaffolding Climbing Ladders
Material:	Aluminum/HDG
Size:	3m
Color:	Silver
Surface Treatment:	HDG (Hot-Dip Galvanized)
Step Width:	50cm
Step Height:	30cm
Load Capacity:	150kg
Warranty:	2 Years
Features:	Suitable for scaffolding climbing platforms, portable and durable with high load capacity, easy to assemble and disassemble, corrosion-resistant with HDG surface treatment





Packing and Shipping:

Packaging and Shipping

Our Scaffolding Ladders are carefully packaged and shipped to ensure safe delivery to your doorstep. The packaging process follows strict quality control measures to ensure that the product arrives to you in perfect condition.

Packaging

Each Scaffolding Ladder is individually wrapped in a protective layer to prevent any scratches or damages during transportation. The

ladder is then placed in a sturdy cardboard box with ample padding and cushioning to prevent any movement or shifting during transit. The box is then sealed and labeled with the product details, including the ladder dimensions and weight, for easy identification and handling.

Shipping

We offer both domestic and international shipping options for our Scaffolding Ladders. Our shipping partners are carefully selected to ensure timely and secure delivery of your order.

For domestic orders, we offer standard and expedited shipping options to suit your needs. International orders will be shipped via our trusted international shipping partners, with all necessary customs documents and forms prepared and included.

Once your order has been shipped, you will receive a tracking number via email to track the progress of your delivery. Our customer service team is also available to assist with any questions or concerns regarding your shipment.

With our careful packaging and reliable shipping options, you can trust that your Scaffolding Ladder will arrive at your doorstep in perfect condition, ready for use.



Bythai Scaffolding Co.,Ltd



17300780862



info@bythaiscaffolding.com



bythaiscaffold.com

No. 605,Industrail Exchange Center ,Huanghua Town Changsha Hunan China